

NEW!

K&S BASIC

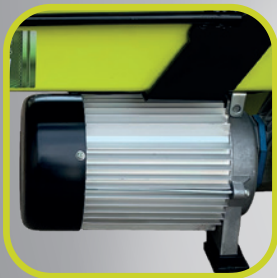
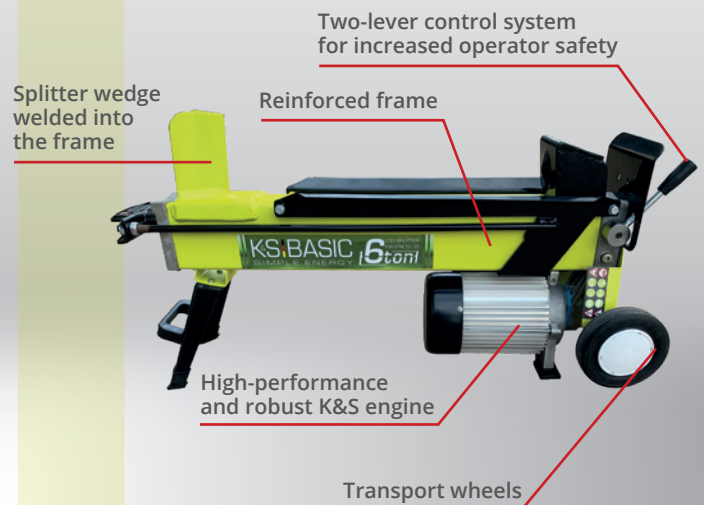
SIMPLE ENERGY

Dimax Int. GmbH (Germany) proudly presents hydraulic type electric log splitter from TM "K&S Basic"

Dimax Int. GmbH (Germany) expands the range of garden equipment and presents an electric log splitter of the hydraulic type from TM "K&S Basic". Smooth operation of hydraulic log splitters allows safe splitting of logs, so that you have enough time to put in another log. These compact electric log splitters are equipped with a robust 1600 W engines and can split logs up to 250 mm in diameter and 520 mm in length.

Electric log splitter **KSB 6THE 52/25**

Log splitter type	hydraulic
Voltage/Frequency	230 V/50 Hz
Motor power	1600 W
Splitting force	6 tons
Motor type	electric
Winding type	aluminum
Max. splitting length	520 mm
Max. splitting diameter	250 mm
Cutting time	~ 10 sec.
Working position	horizontal
Wheels	6"
Net dimensions	980x270x520 mm
Net weight	49/47 kg



Environmentally friendly motor

Electric log splitter from TM "K&S Basic" is equipped with a powerful, reliable and environmentally friendly electric engine.



Hardened steel splitter wedge

Splitter wedge is made of hardened steel welded into the frame, which can withstand heavy loads and is capable of splitting any logs.



Two-level control system

Two-level control system provides increased operator safety. To split a log, you just need to raise the lever and allow the log splitter to do the rest of the job for you.



Protective metal cover

The machine comes complete with an optional protective metal cover (KSB 6T-PC) for add-on operator protection from wood chips during the splitting process.



Pneumatic wheels

Log splitter is equipped with wheels for easy movement even on uneven surfaces, for example, on gravel or soil.

* Protective kit includes polycarbonate glasses, safety gloves, and ear muffs

** Optional accessories can be ordered separately:

- Protective metal cover - KSB 6T-PC

- 4-way splitter blade KSB 6T-BL

THE BEST CHOICE FOR HOME USE!



| www.ks-power.de/en

DIMAX
GROUP